

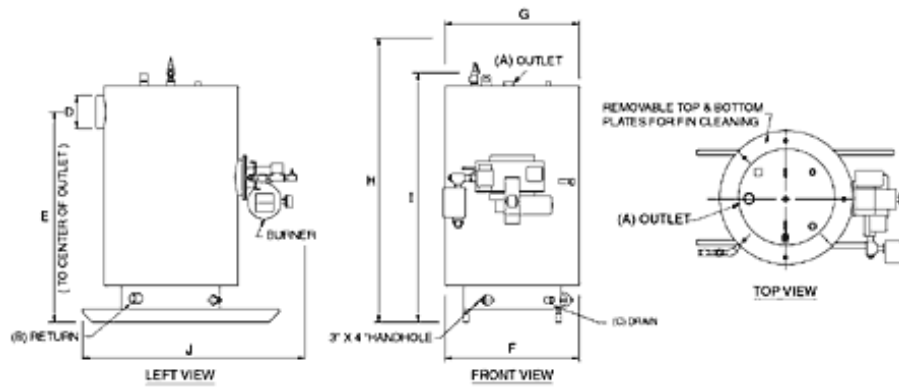
TURBO FIRE (HOT WATER)

The Turbo Fire Hot Water Boilers provide for exceptionally high efficiencies, lower fuel costs, and extremely rugged construction.



OTHER FEATURES :

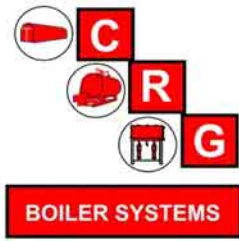
- Compact space saving vertical design
- Four-Pass Design
- Shock Proof, no tubes to loosen or burn out
- Convenient access to “eye high” burner
- Solid State controls for trouble free operation
- Factory assembled, fully automatic
- UL and ASME CSD - 1
- Simple and inexpensive to install
- Low water pressure drops
- Standard design pressure of 30 PSI
Optional to 160 PSI, 250° F



Turbo Fire Specifications

| BOILER HORSEPOWER | | - | 6 | 10 | 15 | 20 | 25 | 30 | 40 | 50 | 60 | 70 | 80 | 100 | - |
|-----------------------------------------------|-------------------|---|------|------|------|------|------|------|------|------|-------|-------|-------|-------|---|
| GROSS OUTPUT | (MBH), BTU X 1000 | | 201 | 335 | 502 | 670 | 837 | 1004 | 1339 | 1674 | 2009 | 2343 | 2678 | 3348 | |
| | KCAL X 1000 | | 51 | 84 | 127 | 169 | 211 | 253 | 337 | 422 | 506 | 590 | 675 | 844 | |
| INPUT REQUIRED | BTU X 1000 | | 251 | 418 | 628 | 837 | 1046 | 1255 | 1674 | 2092 | 2511 | 2929 | 3348 | 4184 | |
| | KCAL X 1000 | | 63.3 | 105 | 158 | 211 | 264 | 316 | 422 | 527 | 633 | 738 | 844 | 1054 | |
| FIRING RATE NAT. GAS 1000 BTU/FT ³ | FT 3/HR. | | 251 | 418 | 628 | 837 | 1046 | 1255 | 1674 | 2092 | 2511 | 2929 | 3348 | 4184 | |
| | M 3/HR. | | 7.1 | 11.8 | 17.8 | 23.7 | 29.6 | 35.5 | 47.4 | 59.2 | 71.1 | 82.9 | 94.8 | 118.5 | |
| FIRING RATE L.P. GAS 91,500 BTU/GAL. | GPH | | 2.7 | 4.6 | 6.9 | 9.1 | 11.4 | 13.7 | 18.3 | 22.9 | 27.4 | 32 | 36.6 | 45.7 | |
| | LPH | | 10.4 | 17.3 | 26 | 34.6 | 43.3 | 51.9 | 69.2 | 86.6 | 103.9 | 121.2 | 138.5 | 173.1 | |
| FIRING RATE #2 OIL 140,000 BTU/GAL. | GPH | | 1.8 | 3 | 4.5 | 6 | 7.5 | 9 | 12 | 14.9 | 17.9 | 20.9 | 23.9 | 29.9 | |
| | LPH | | 6.8 | 11.3 | 17 | 22.6 | 28.3 | 33.9 | 45.3 | 56.6 | 67.9 | 79.2 | 90.5 | 113.1 | |
| A OUTLET SIZE | IN. | | 2 | 2 | 2 | 3 | 3 | 4 | 4 | 6 | 6 | 6 | 6 | 6 | |
| | MM | | 51 | 51 | 51 | 76 | 76 | 102 | 102 | 152 | 152 | 152 | 152 | 152 | |
| B RETURN SIZE | IN. | | 2 | 2 | 2 | 2.5 | 2.5 | 3 | 3 | 4 | 4 | 4 | 4 | 4 | |
| | MM | | 51 | 51 | 51 | 64 | 64 | 76 | 76 | 102 | 102 | 102 | 102 | 102 | |
| C DRAIN SIZE | IN. | | 1 | 1 | 1 | 1 | 1 | 1.25 | 1.25 | 1.25 | 1.25 | 1.5 | 1.5 | 1.5 | |
| | MM | | 25 | 25 | 25 | 25 | 25 | 32 | 32 | 32 | 32 | 38 | 38 | 38 | |
| D STACK DIA. | IN. | | 8 | 8 | 8 | 8 | 8 | 10 | 12 | 12 | 12 | 14 | 14 | 14 | |
| | MM | | 203 | 203 | 203 | 203 | 203 | 254 | 305 | 305 | 305 | 356 | 356 | 356 | |
| E STACK HEIGHT | IN. | | 52 | 52 | 58 | 64 | 64 | 63 | 73 | 83 | 83 | 82 | 82 | 82 | |
| | MM | | 1321 | 1321 | 1473 | 1626 | 1626 | 1600 | 1854 | 2108 | 2108 | 2083 | 2083 | 2083 | |
| F WIDTH WITHOUT TRIM | IN. | | 35.2 | 35.2 | 35.2 | 35.2 | 35.2 | 41 | 50 | 59 | 59 | 68 | 68 | 78.2 | |
| | MM | | 894 | 894 | 894 | 894 | 894 | 1041 | 1270 | 1499 | 1499 | 1727 | 1727 | 1986 | |
| G WIDTH WITH TRIM | IN. | | 42 | 42 | 42 | 42 | 42 | 47 | 55 | 63 | 63 | 72 | 72 | 82 | |
| | MM | | 1067 | 1067 | 1067 | 1067 | 1067 | 1194 | 1397 | 1600 | 1600 | 1829 | 1829 | 2083 | |
| H OVERALL HEIGHT | IN. | | 70 | 70 | 76 | 82 | 82 | 82 | 93 | 105 | 105 | 106 | 106 | 106 | |
| | MM | | 1778 | 1778 | 1930 | 2083 | 2083 | 2083 | 2362 | 2667 | 2667 | 2692 | 2692 | 2692 | |
| I HEIGHT WITHOUT TRIM | IN. | | 65 | 65 | 71 | 77 | 77 | 77 | 88 | 98 | 98 | 98 | 98 | 98 | |
| | MM | | 1651 | 1651 | 1803 | 1956 | 1956 | 1956 | 2235 | 2489 | 2489 | 2489 | 2489 | 2489 | |
| J LENGTH | IN. | | 60 | 60 | 60 | 60 | 60 | 78 | 87 | 115 | 115 | 120 | 120 | 127 | |
| | MM | | 1524 | 1524 | 1524 | 1524 | 1524 | 1981 | 2210 | 2921 | 2921 | 3048 | 3048 | 3226 | |
| WATER CAPACITY | GALS. | | 62 | 62 | 68 | 79 | 79 | 113 | 208 | 313 | 313 | 440 | 440 | 591 | |
| | LITERS | | 235 | 235 | 257 | 299 | 299 | 428 | 787 | 1185 | 1185 | 1665 | 1665 | 2237 | |
| SHIPPING WEIGHT | LBS. | | 1600 | 1600 | 1750 | 1800 | 1800 | 2175 | 3775 | 5300 | 5300 | 7300 | 7300 | 8700 | |
| | KG. | | 726 | 726 | 794 | 816 | 816 | 987 | 1712 | 2404 | 2404 | 3311 | 3311 | 3946 | |
| BOILER HORSEPOWER | | - | 6 | 10 | 15 | 20 | 25 | 30 | 40 | 50 | 60 | 70 | 80 | 100 | - |

Outlet connection over four inches are 150# flanges. All other connections are NPT. We assume no responsibility for errors in data.



C.R.G. Electric, Inc /CRG Boiler
Systems
PO Box 69008 Odessa, Tx 79769
Ph. (432) 381-2493
Fax. (432) 381-2724
www.crgboilers.com